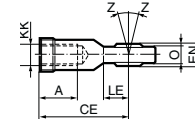
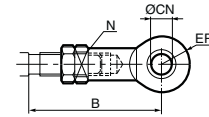


## Cylinder mountings

Type	Description	Cyl. bore Ø mm	Weight kg	Order code
<b>Swivel rod eye</b>	Swivel rod eye for articulated mounting of cylinder. Swivel rod eye can be combined with clevis bracket GA. Maintenance-free.	160 200	2,00 2,00	<b>P1C-4SRS</b> <b>P1C-4SRS</b>



Materials  
Swivel rod eye: Zinc-plated steel  
Swivel bearing according to DIN 648K: Hardened steel



According to ISO 8139

Cyl. bore mm	A mm	B min mm	B max mm	CE mm	CN H9 mm	EN h12 mm	ER mm	KK M36x2	LE min mm	N mm	O mm	Z mm
160	56	139	161	125	35	43	40	M36x2	41	14	28	15°
200	56	139	161	125	35	43	40	M36x2	41	14	28	15°

## Clevis



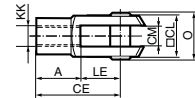
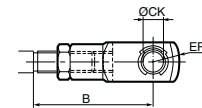
Clevis for articulated mounting of cylinder.

Material  
Clevis, clip: Galvanized steel  
Pin: Hardened steel

160  
200

4,30  
4,30

**P1C-4SRC**  
**P1C-4SRC**



According to ISO 8140

Cyl. bore mm	A mm	B min mm	B max mm	CE mm	CK h11/E9 mm	CL mm	CM mm	ER mm	KK M36x2	LE mm	O mm
160	72	158	180	144	35	70	35	50	M36x2	72	83
200	72	158	180	144	35	70	35	50	M36x2	72	83

## Nut



Intended for fixed mounting of accessories to the piston rod.  
Material: Zinc-plated steel

The cylinders are delivered with a zinc-plated steel piston rod nut

160  
200

0,110  
0,110

**9128985606**  
**9128985606**

According to DIN 439 B

Cyl. bore mm	d mm	M mm	S mm
160	M36x2	14	55
200	M36x2	14	55

